



1475 Folsom Street

**Historic Brewery
meets Creative
Office**

3,200 SQFT

Plug & Play Sublease

Innovation Properties Group

181 2nd Street, San Francisco, CA
www.ipgsf.com | CL 02031924

Charlie Cutler | Vice President

(415) 850-4935 | charlie@ipgsf.com
BRE 02026787

Chris Baker | Senior Associate

(650) 315-9858 | chrise@ipgsf.com
BRE 02116566



Plug & Play Creative Sublease

- Historic Jackson Brewery SF
Landmark #199
- Circa 1920s aesthetic modernized
for tech users
- Entire 2nd Floor - High company
identity opportunity
- Move-in ready 100% Plug & Play
Sublease
- 25 sit/stand workstations
- Excellent natural light throughout
- 1 exposed brick meeting room
- 2 phone booths
- Real wood floors
- Flexible term (short term ok)

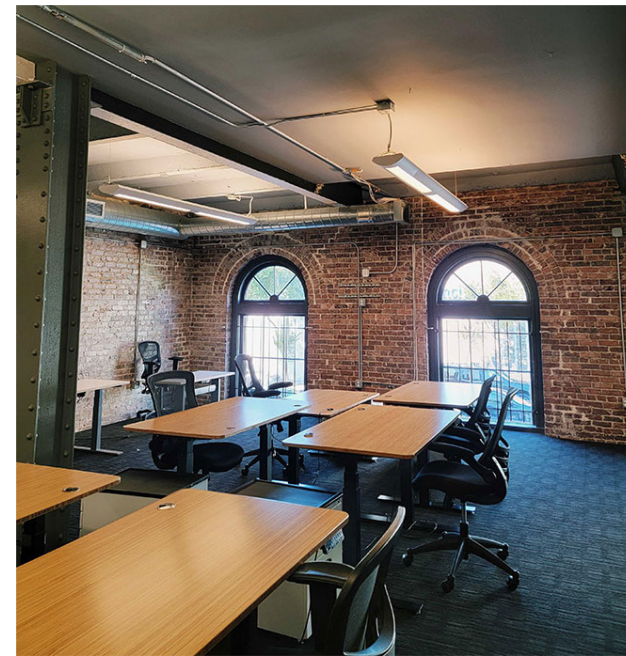
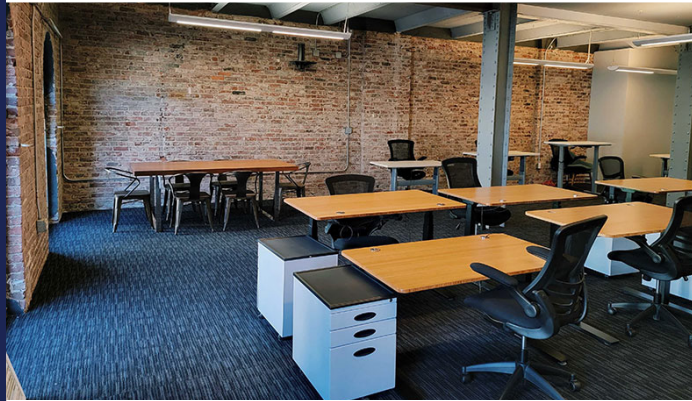
Innovation Properties Group

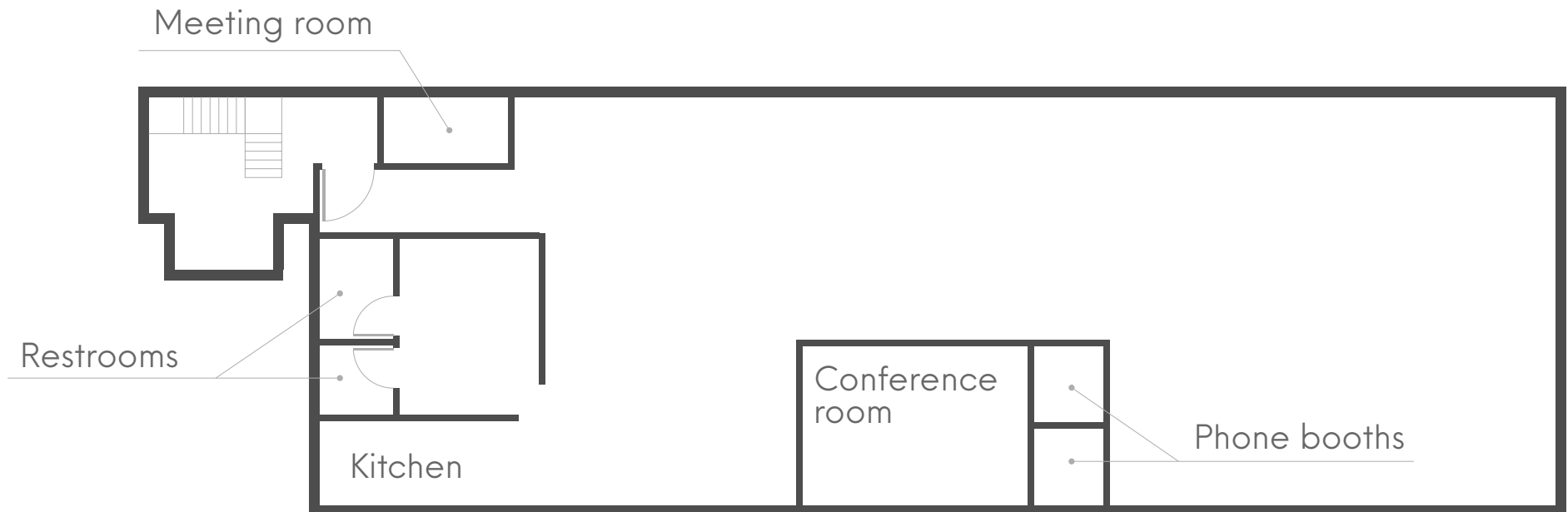
181 2nd Street, San Francisco, CA
www.ipgsf.com | CL 02031924

Charlie Cutler | Vice President
(415) 850-4935 | charlie@ipgsf.com
BRE 02026787

Chris Baker | Senior Associate
(650) 315-9858 | chris@ipgsf.com
BRE 02116566

1475 Folsom St





Open Workspace

Innovation Properties Group
181 2nd Street, San Francisco, CA
www.ipgsf.com | CL 02031924

Charlie Cutler | Vice President
(415) 850-4935 | charlie@ipgsf.com
BRE 02026787

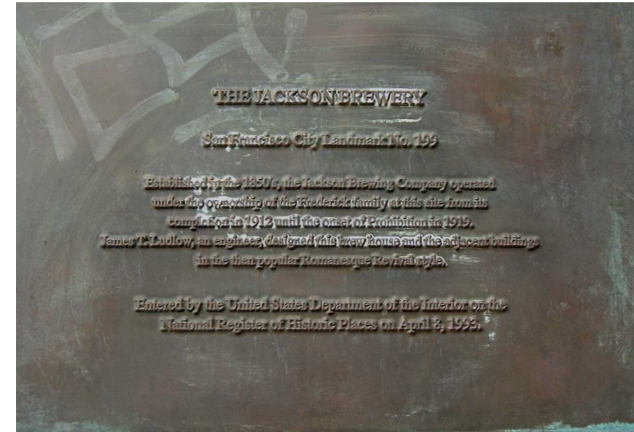
Chris Baker | Senior Associate
(650) 315-9858 | chris@ipgsf.com
BRE 02116566

I | P | G

INNOVATION PROPERTIES GROUP

History at a Glance

"The Jackson Brewing Company was founded in 1867 and moved to its present location at 1475 Folsom in 1905. The 1906 earthquake and fire partially destroyed the building and while the brewery closed in 1920 due to Prohibition the complex is one of the last remaining turn-of-the-century breweries on the west coast."





Best West Soma Location:

- ③ Michelin Star Restaurant Californios Next Door
- ⑤ Soma Streetfood park

Nightlife options

- ③① Audio
- ③② Bergerac
- ③③ Butter

1 Block to

- ① Costco
- ③④ Target

Amenities

- | | | | | | |
|--------------------|---------------------|-------------------------|------------------------------|-------------------------------|---------------------------|
| ① Costco Wholesale | ⑥ Trader Joe's | ⑪ Cellarmaker Brewing | ⑬ Chantal Guillon Patisserie | ⑮ Best Buy | ⑳ Tin Vietnamese Cuisine |
| ② Lone Star Saloon | ⑦ Potero Center | ⑫ Square Pie Guys | ⑭ Driftwood | ⑯ Dumpling Time | ㉑ San Francisco City Hall |
| ③ Caloformios | ⑧ Rainbow Grocery | ⑬ Sushi Ondo | ⑰ Zeitgeist | ㉒ REI | ㉒ Asian Art Museum |
| ④ Butter | ⑨ Franklin Square | ⑭ The Willows | ⑱ Shizen Vegan Sushi Bar | ㉓ Turtle Tower | ㉓ Blue Bottle Coffee |
| ⑤ District Six | ⑩ Sightglass Coffee | ⑮ Joint Venture Kitchen | ㉒ Standard Deviant Brewing | ㉔ San Francisco Flower Market | ㉔ BAIA |



Californios



Audio SF



Bergerac



West Soma food park



I | P | G

INNOVATION PROPERTIES GROUP

1475 Folsom Street

Innovation Properties Group

181 2nd Street, San Francisco, CA

www.ipgsf.com | CL 02031924

Charlie Cutler | Vice President

(415) 850-4935 | charlie@ipgsf.com

BRE 02026787

Chris Baker | Senior Associate

(650) 315-9858 | chris@ipgsf.com

BRE 02116566

This document has been prepared by IPG for advertising and general information only. IPG makes no guarantees, representations or warranties of any kind, expressed or implied, regarding the information including, but not limited to, warranties of content, accuracy and reliability. Any interested party should undertake their own inquiries as to the accuracy of the information. IPG excludes unequivocally all inferred or implied terms, conditions and warranties arising out of this document and excludes all liability for loss and damages arising therefrom. This publication is the copyrighted property of IPG and/or its licensor(s). ©2021. All rights reserved.