

I | P | G

INNOVATION
PROPERTIES
GROUP

150 Post St
San Francisco

Creative Brick & Timber Sublease in Financial District SOMA

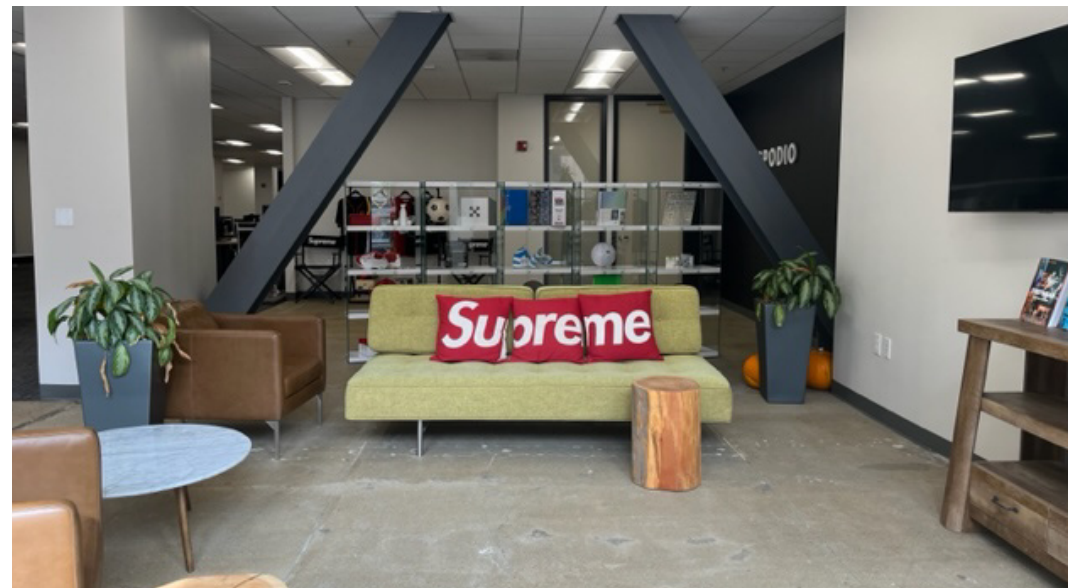
Term through Oct 2027

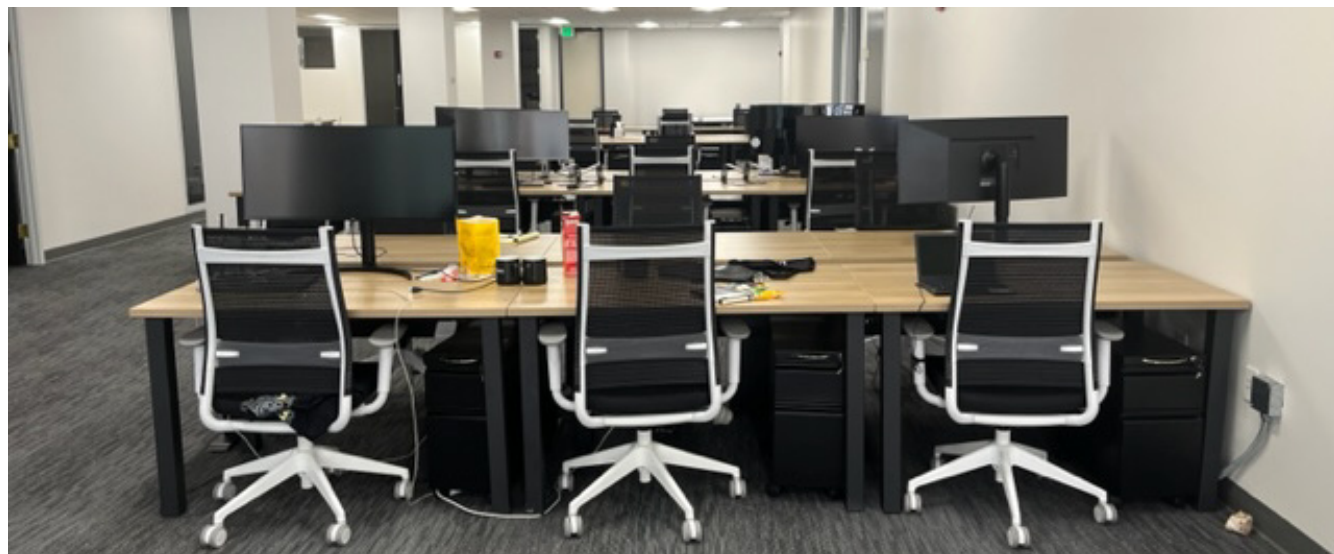
7,747 RSF

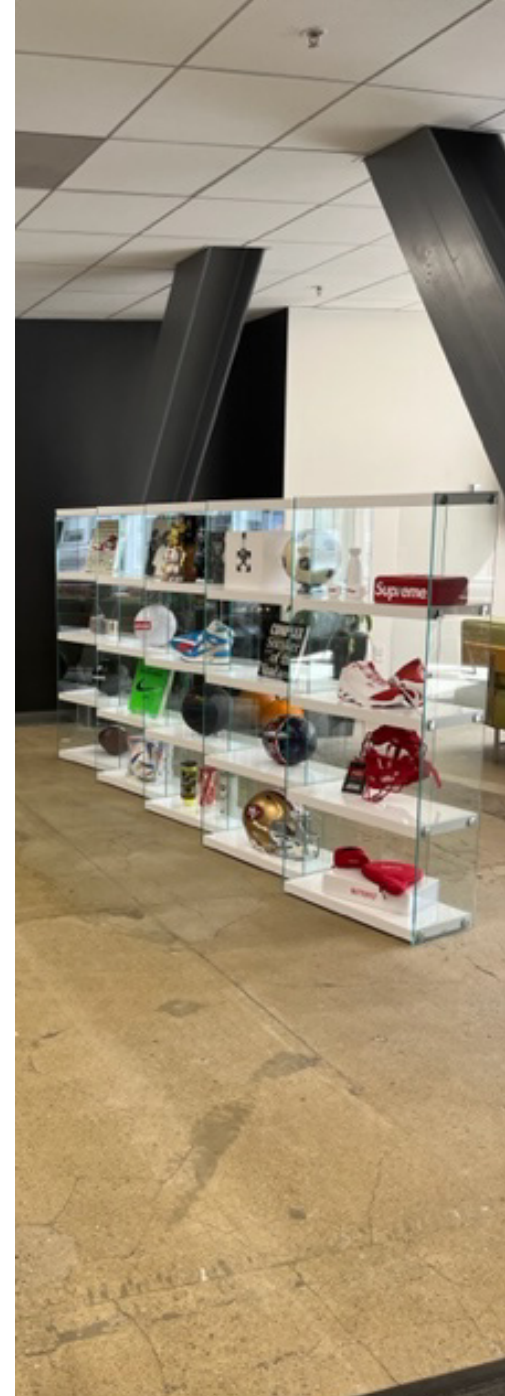
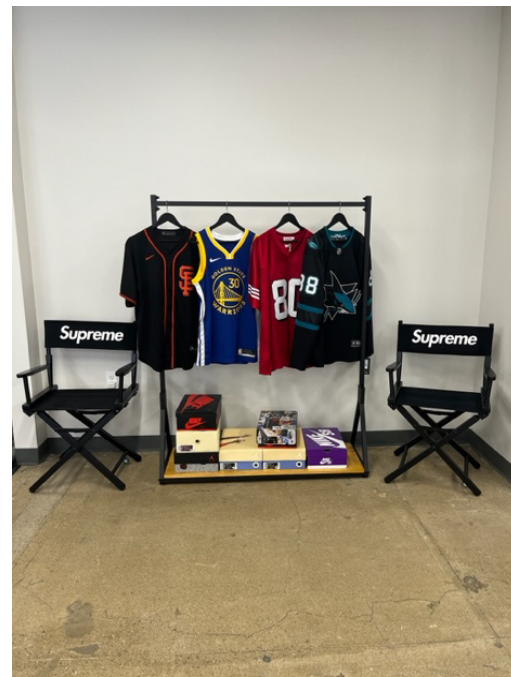
ipgsf.com

Property Highlights:






- Open Office With 40 Sit/Stand Workstations
- Four (4) Meeting Rooms
- Two (2) Conference Rooms
- One (1) Phone Booth
- Full Kitchen With Breakout Area
- Exposed Brick Throughout
- Great Natural Light
- Full HVAC
- 24/7 Security

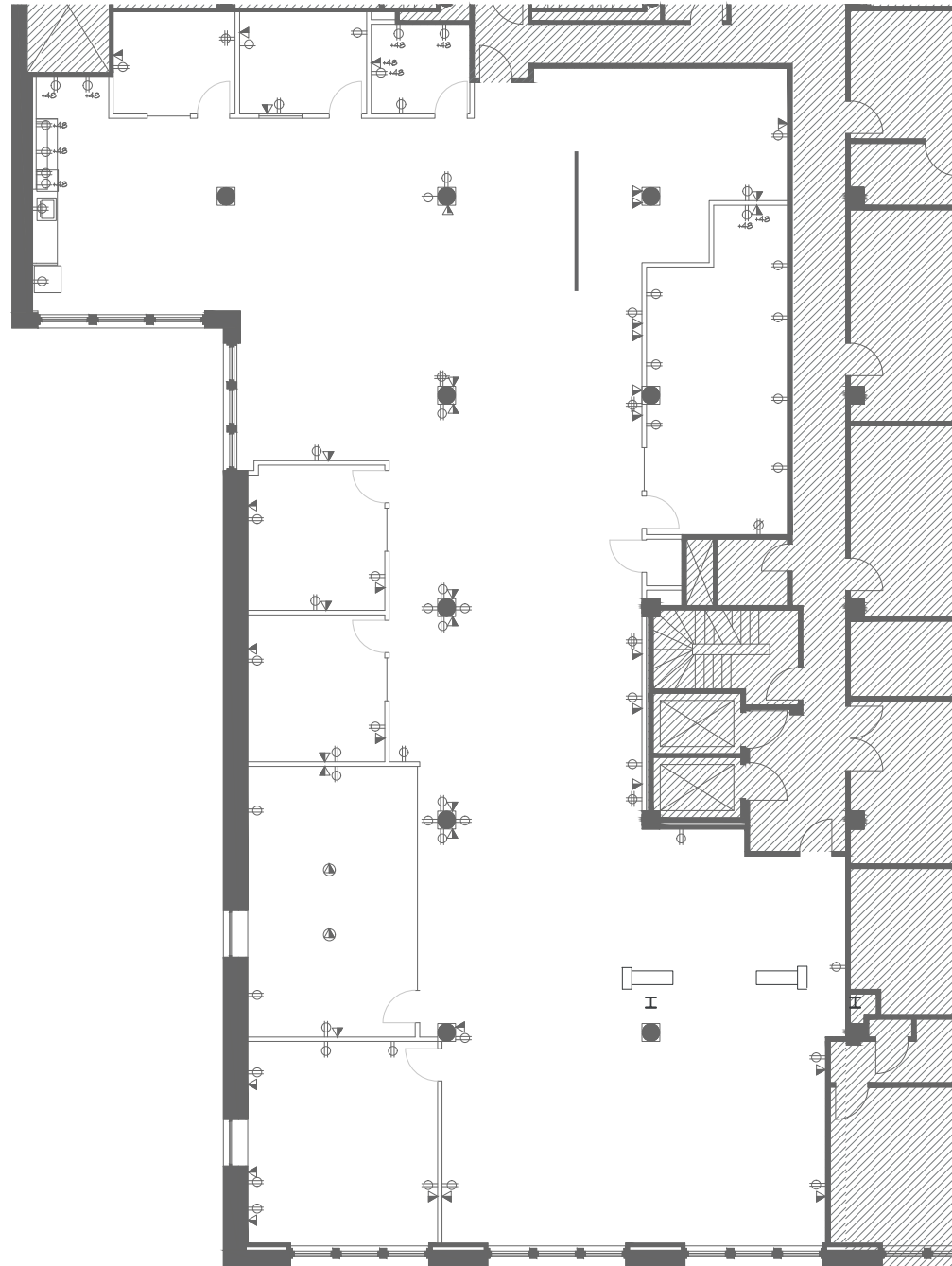


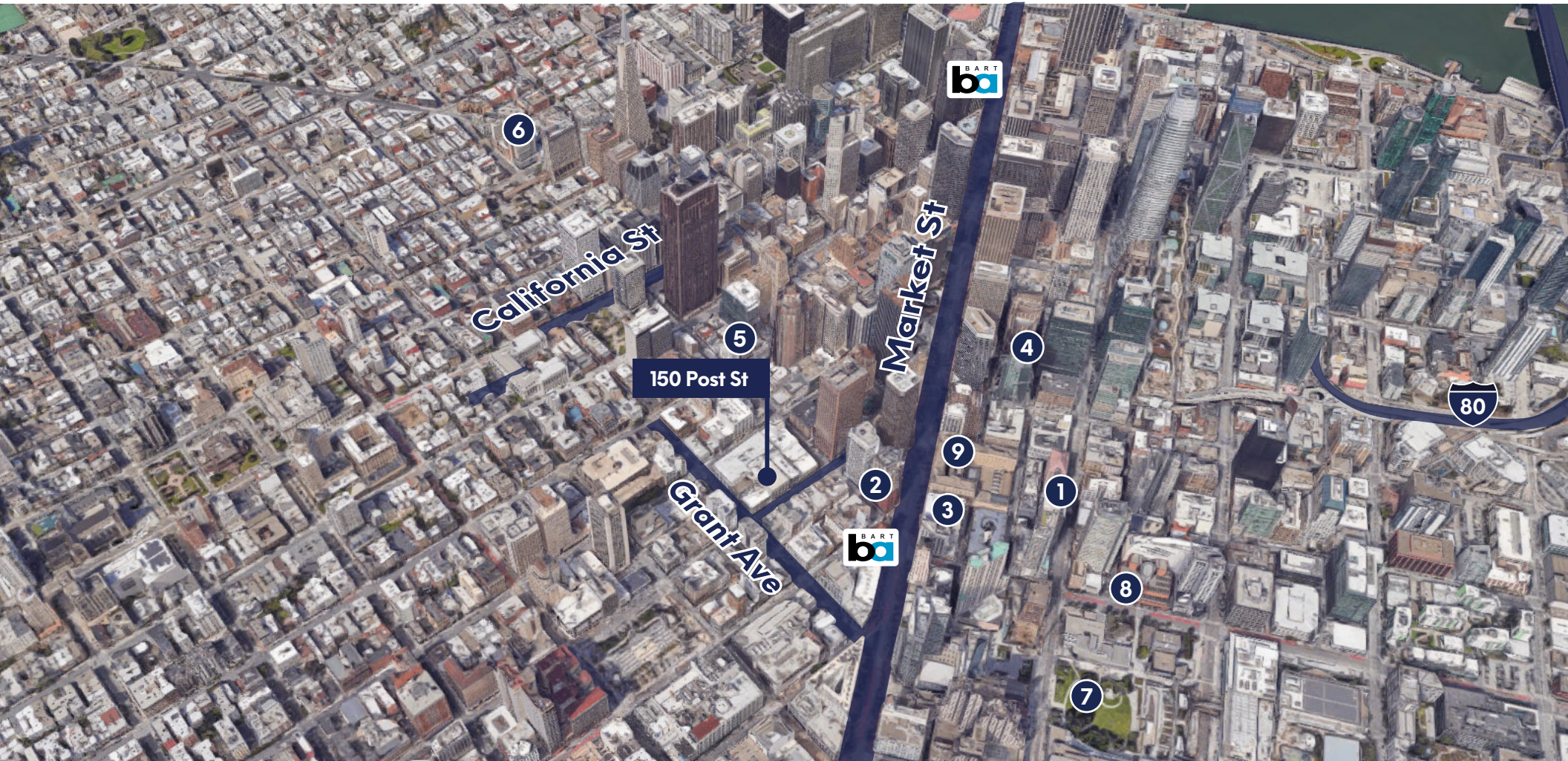




SYMBOLS LEGEND

-  DUPLEX POWER OUTLET
-  QUAD POWER OUTLET
-  TELE/DATA OUTLET
-  TELE/DATA FLOOR OUTLET
-  240V TWISTLOCK OUTLET





- | | |
|----------------------|-------------------------|
| 1 Novela | 4 Yank Sing |
| 2 Hakkasan | 5 Sam's Grill & Seafood |
| 3 Blue Bottle Coffee | 6 Trestle |



- | |
|------------------------|
| 7 Yerba Buena Center |
| 8 Museum of Modern Art |
| 9 Palace Hotel |



INNOVATION
PROPERTIES
GROUP

150 **Post St**
San Francisco

For leasing information

Innovation Properties Group

181 2nd Street, San Francisco, CA

www.ipgsf.com | CL 02031924

Charlie Cutler | Senior Vice President

(415) 850-4935 | charlie@ipgsf.com

BRE 02026787

Casaldra Andreassen | Associate

(631) 478-8343 | casaldra@ipgsf.com

BRE 02028086

ipgsf.com

This document has been prepared by IPG for advertising and general information only. IPG makes no guarantees, representations or warranties of any kind, expressed or implied, regarding the information including, but not limited to, warranties of content, accuracy and reliability. Any interested party should undertake their own inquiries as to the accuracy of the information. IPG excludes unequivocally all inferred or implied terms, conditions and warranties arising out of this document and excludes all liability for loss and damages arising there from. This publication is the copyrighted property of IPG and/or its licensor(s). ©2023. All rights reserved.